

Commercial GEAR

LASER®

FEB - APR 2026 **ISSUE 1**

LASER®

Live



24th March 2pm

Join us for live demonstrations:
Watch our expert team demonstrate the newest tools from Laser!

www.lasertools.co.uk/LaserLive

Oil Service Station - 70L

9127

The Ultimate for Oil Service Changes!

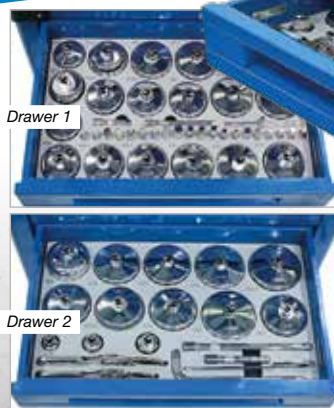
A fully equipped mobile oil service station that combines a conventional height-adjustable gravity draining pan, vacuum draining hopper and waste oil tank into a free standing fully mobile station. Includes 3 storage drawers containing a 61pc set of oil filter cup wrenches & drain keys.

- **Oil Storage:** Maximum storage tank capacity: 70L with sight glass. Catch pan: 10L. Measuring cup (vacuum): 10L.
- **Oil suction tubes:** 1 x 5mm Ø, 2 x 6mm Ø, 2 x 8mm Ø x 700mm long.
- **Uses workshop air for vacuum extraction & emptying.** Also features: 4 x 4" wheels (2 fixed & 2 swivel with brakes).
- **3 x drawers for storage of oil service tools.**



Height adjustable catch pan from 1.6m up to 1.9m

Minimum working height: 1.6m



Drawer 1

Drawer 2

Includes **61pc** Oil Filter Cup & Drain Keys Set

NEW

Includes 12V DC electric pump



Large oil catch area.

Max capacity **76L**

2 fixed & 2 swivel castors with brakes.

Low Level Oil Drainer with Electric Pump Out - 76L

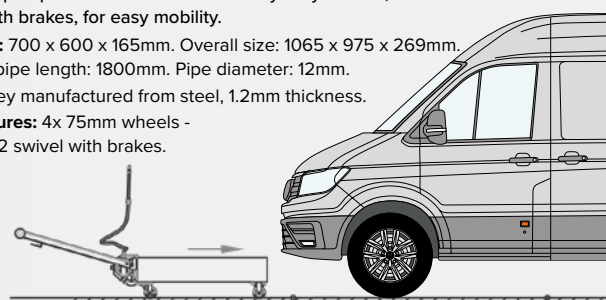
9253

A low-level oil drainer designed to push under high standing vehicles, such as Commercial Vehicles and large vans, and equipped with an electric pump for waste oil pump out. Also features 4x heavy-duty castors, 2x fixed and 2x swivel with brakes, for easy mobility.

- **Tank size:** 700 x 600 x 165mm. Overall size: 1065 x 975 x 269mm. Oil drain pipe length: 1800mm. Pipe diameter: 12mm.
- **Main trolley manufactured from steel, 1.2mm thickness.**
- **Also features:** 4x 75mm wheels - 2 fixed & 2 swivel with brakes.



9253 - Low profile oil catcher tray designed to be pushed under high standing vehicles.



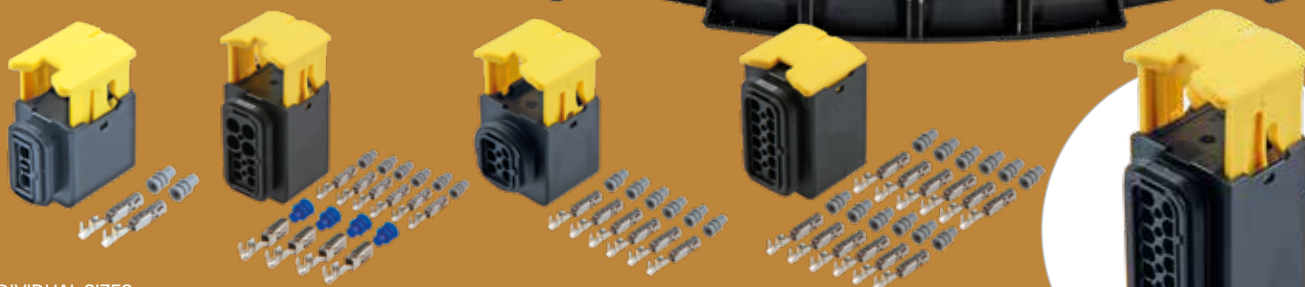
HDSCS Connector Assorted Kit - 265pc

34337

An assorted box of HDSCS (Heavy-Duty Sealed Connectors) includes terminals and seals. Suitable for a range of applications, including commercial and off-road vehicles.

- **Kit contains:** 2, 3, 4, 6, 7, 8, 10, 12, 16, & 18 pin connectors with terminals & wire seals.
- **Terminal sizes:** 1.5 & 2.8. To be used on 1.0mm² - 2.0mm² cable. For crimping tool, please see Laser Part No. 7002.
- Supplied in a multi-compartment Polypropylene (PP) storage case with carrying handle. Size: 315 x 255 x 62mm.

NEW



INDIVIDUAL SIZES

| Code | Size |
|-------|--------------------------------|
| 34338 | HDSCS Connector 2 Pin 1.5 |
| 34340 | HDSCS Connector 3 Pin 1.5 |
| 34342 | HDSCS Connector 6 Pin 1.5 |
| 34346 | HDSCS Connector 7 Pin 1.5/2.8 |
| 34347 | HDSCS Connector 8 Pin 1.5 |
| 34343 | HDSCS Connector 10 Pin 1.5/2.8 |

| Code | Size |
|-------|--------------------------------|
| 34344 | HDSCS Connector 12 Pin 1.5 |
| 34339 | HDSCS Connector 2 Pin 2.8 |
| 34341 | HDSCS Connector 4 Pin 2.8 |
| 34348 | HDSCS Connector 8 Pin 2.8 |
| 34345 | HDSCS Connector 16 Pin 1.5/2.8 |
| 34349 | HDSCS Connector 18 Pin 1.5 |

Connect[®]
Workshop Consumables



Non-Insulated Terminal & Anderson Type Plug Tool Kit

7532

Ideal kit for track day or motorsport use and also recovery trucks or roadside/mobile technicians.

- **Kit includes:** 1 ratchet crimper for non insulated terminals and Anderson Type Plugs, contacts, 1 cable cutter for cable up to 38mm², 6-2 pole 50 amp Anderson housing (2 x red, grey, yellow).
- Plus relevant accessories: non-insulated terminals, heat shrink tubing and dual wall heat shrink tubes.

Many more HGV specialist tools online

- Hybrid & EV
- Servicing
- AdBlue[®]
- Lubrication
- Wheel Maintenance
- Transmission
- Suspension
- Brake Caliper
- Electrical Systems
- And many more...

View our website for our latest range
www.lasertools.co.uk



Damaged Wheel Nut Socket

3/4"D - HGV

A special profile that grips the socket designed specifically for removing damaged nuts and bolts.

This twin drive socket also features an 36mm outer hex drive, for use with any 36mm impact socket.

- **Applications include:**
HGV truck & trailer wheel nuts.

| Code | Size | Drive |
|------|------|-------|
| 9256 | 32mm | 3/4"D |
| 9233 | 33mm | 3/4"D |



Rim stop end

NEW

Tyre Lever Bar for HGV - 965mm

9324

A high strength steel tyre lever specially developed for use on bigger heavier vehicles including HGV's. The specially shaped ends allow the lever to hook into the rim or tyre bead as required when fitting or removing the bead. Offers significant leverage abilities.

- **Applications include:** HGV, agricultural, vans & 4x4 vehicles.
- **Dimensions:** Length: 965mm, shaft diameter: 22mm, forged ends 33mm wide.
- **Double ended:** 1x rim stop end, 1x tyre bead stop.



Tyre bead stop end

Budd Wheel Nut Sockets

Suitable for front and rear axle wheels on imported trucks where twin wheels are used. The inner wheel is held on by a stud with a square drive. This goes over the stud on the hub; the outer wheel is held to the inner wheel by a conventional wheel nut that goes on the stud which holds the inner wheel to the hub.

3/4"D 19mm

6980

- **Applications:**
Mitsubishi Canter, Fuso.
- **Length:** 90mm, square profile.



3/4"D 21mm

7003

- **Applications:** Isuzu, Mitsubishi Fuso and Hino.
- **Length:** 90mm, square profile



1"D 17mm

8407

- **Applications:** Isuzu; Mitsubishi Fuso & Hino.
- **Length:** 90mm, square profile.



1"D 20mm x 38mm

7246

- **Applications:** Mitsubishi Canter & Canter FE111 (rear).
- **Length:** 99mm; Hex profile.



1"D 21mm x 41mm

7247

- **Applications:** Toyota Dyna & Dynaps 140 (rear); Toyota Dyna & Rino (front). Isuzu NPR (front & rear).
- **Length:** 99mm; Hex profile.



PRODUCT VIDEO



Air Impact Wrench 3/4"D with 6" Anvil

9208

Extended anvil (output shaft) for recessed wheel nut access and user convenience, much lighter in weight than other industry models. Ideal solution in HGV wheel replacement, vehicle repair, fleet maintenance, heavy plant, construction and agriculture.

- 3/4" drive producing 2170Nm maximum torque.
- Working torque: 1763Nm (1,300 ft-lb) at 5 seconds.
- Loosening torque: 3526Nm (2,600 ft-lb) at 25 seconds.



Hand Tools

Drive Shaft Puller/ Extractor Set 7pc

4847

A set comprising of drive shaft puller and 6 adaptors, designed for pulling drive shafts into hubs on Audi, BMW, Fiat, Ford, Mercedes-Benz, Peugeot, Porsche, Renault, Subaru, Vauxhall, Opel and Volvo.

- M16 x 1.5 adaptor for Subaru; M20 x 1.5 for Volkswagen Beetle, Touareg & Porsche Cayenne.
- M24 x 1.5 adaptor for BMW E36 & Mercedes-Benz W203.



Track Rod End Removal Socket - for HGV

An impact quality track rod end and drag link end removal tool specially designed to help prevent cam-out.

Track Rod Adjusting Wrench

8828

Traditional pipe-wrench style with added features to make an efficient method of removing and adjusting track rods and track rod ends.

- Pipe wrench type design with quick fit spring loaded jaw.
- Serrated jaws help prevent slippage & damage.



Spring loaded
drop-forged jaw
for strength

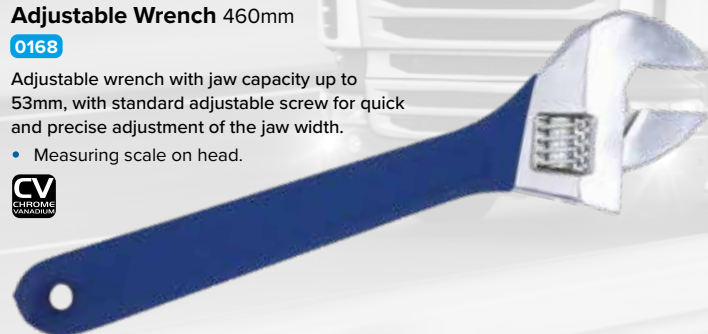
| Code | Hex | Size |
|------|------|--|
| 6443 | 36mm | 80mm internal dia, 32.8mm slot width, 70mm internal depth. |
| 7496 | 32mm | 70mm internal dia, 27mm slot width, 58mm internal depth. |

Adjustable Wrench 460mm

0168

Adjustable wrench with jaw capacity up to 53mm, with standard adjustable screw for quick and precise adjustment of the jaw width.

- Measuring scale on head.



Adjustable Wrench 380mm

0167

Adjustable wrench with jaw capacity up to 45mm, with standard adjustable screw for quick and precise adjustment of the jaw width.

- Measuring scale on head.



Ratchet Ring Combination Spanner Set 20 - 32mm - 7pc

9124

Popular larger sizes from 20 to 32mm. Featuring a 72-tooth ratchet mechanism means that just 5° of movement is required, allowing fasteners to be turned quicker and making them ideal for use in confined areas.

- Sizes: 20, 21, 22, 24, 27, 30 & 32mm.



Jumbo Combination Spanner Set 6pc

4887

Heavy duty combination spanner set, with 6 sizes from 34mm up to 50mm.

- Manufactured from chrome vanadium with satin finish & polished jaws.



Combination Spanner Set

6 - 32mm 25pc

6396

A professional, comprehensive set of 25 Bi-Hex (12pt) combination spanners in a fully polished finish. Covers most common servicing and maintenance tasks in the workshop.

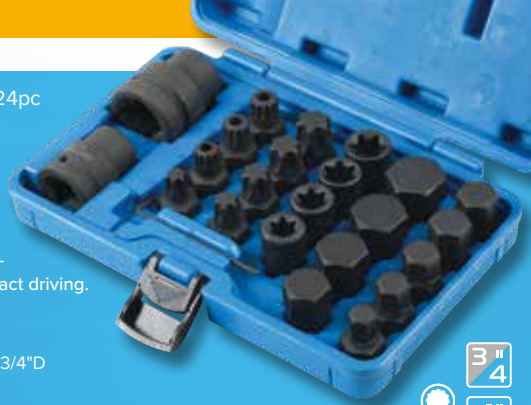
- Bi-Hex (12pt) profile with 15° offset head for faster and easier use in tight spaces.
- Supplied in a tough spanner roll for safe storage, with eyelets to allow wall mounting.



Impact Bit & Socket Set 3/4"D, 1"D 24pc 6891

A dual 3/4" and 1" square drive impact socket and bit set that includes a comprehensive selection of hex, star* and spline profiles. Ideal for use on commercial vehicles. A high-quality set designed for the demands of impact driving.

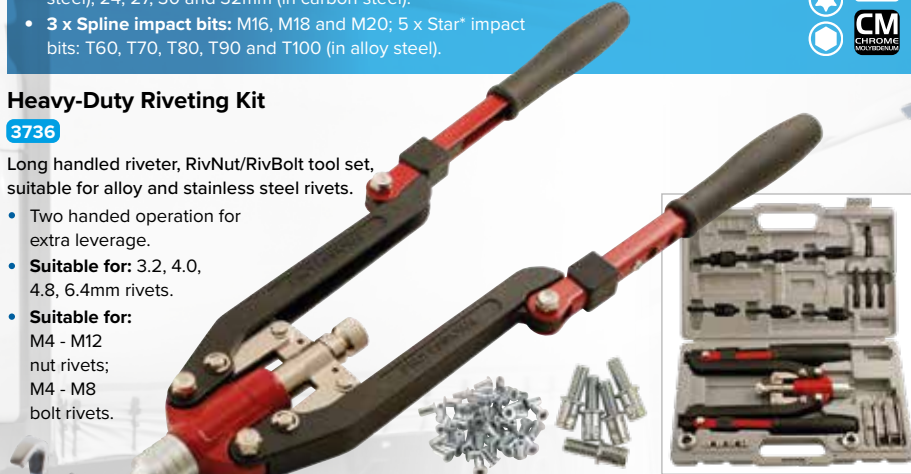
- **4 Star* impact sockets:** E18, E20, E22 and E24. Depth: 107mm.
- **Adaptors:** 1"D x 22mm Hex x 62mm long; 3/4"D x 22mm Hex x 52mm long and 1 x 2.5mm.
- **9 x Hex impact bits:** 14, 17, 19, 21, 22mm (in alloy steel); 24, 27, 30 and 32mm (in carbon steel).
- **3 x Spline impact bits:** M16, M18 and M20; 5 x Star* impact bits: T60, T70, T80, T90 and T100 (in alloy steel).



Heavy-Duty Riveting Kit 3736

Long handled riveter, RivNut/RivBolt tool set, suitable for alloy and stainless steel rivets.

- Two handed operation for extra leverage.
- **Suitable for:** 3.2, 4.0, 4.8, 6.4mm rivets.
- **Suitable for:** M4 - M12 nut rivets; M4 - M8 bolt rivets.



Spanner Extension Wrench 6745

Firmly grips the shaft of the spanner to extend the leverage and exert a greater force. Ideal for freeing rusty, tight or seized nuts and fasteners even in confined or hard to reach areas.

- Long length (385mm) for plenty of leverage.



Ratchet Handle Extra Long Leverage - 120 Teeth 3/4"D 9054

Includes three dual purpose extension bars that can be assembled together to fit the end of the ratchet creating extra leverage and torque. A high-quality ratchet action, suitable for HGV service workshops, heavy plant machinery or agricultural work.

- 120 teeth ratchet mechanism with 3° ratcheting arc.
- Length: 510mm.
- Maximum load capacity: 2,034Nm.



LTR Magnetic Tool Pad 8896

Heavy-duty magnetic mat, keeps tools & small parts to hand.

- **Size:** 310 x 250 x 8mm.
- PVC leather-look material for durability, with a wipe clean surface.



Pry Bar Set 4pc 3994

A set of 4 high quality mixed size pry bars with soft, ergonomic grip handles.

- Dimensions (length x tip width): 600 x 20mm, 460 x 20mm, 300 x 15mm, 200 x 10mm.
- Supplied with protective caps for tips.
- Soft grip handles.



Circlip Plier Set 180mm 4pc 6685

Set of four circlip pliers for internal and external use, with bent and straight tip heads. Spring-loaded, 180mm long with plastic dipped, soft grip handles.

- 2 x straight nose, 2 x bent nose.



Combination Pliers - Including Screw Extraction 9121

Uniquely shaped jaws that allow them to grip screw heads and small rounded bolt heads better than standard flat style combination pliers.

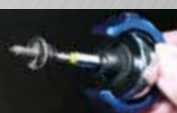
- **Length:** 230mm; **jaw opening:** 23mm.



Swivel Palm Grip Magnetic Bit Set 25pc 8648

A palm ratchet driver, ideal for reaching those difficult to access fasteners, supplied together with a set of 24 interchangeable bits that each feature a colour-coded ring and an integral magnetic screw holder.

- **Contains:** 24 x 50mm long power tool bits, with quick chuck ends: PzDrive: Pz1 - Pz3; Phillips: Ph1 - Ph3; Hex: 3 - 6mm; Torx: T10 - T40; Tamperproof Torx bits: T10 - T40.
- Also includes a swivel palm ratchet with magnetic 1/4" shank bit driver.



Pneumatic Oil Drainer 70L

9252

A mobile oil drainer equipped with height-adjustable gravity draining pan (1.35 to 1.65m) and pneumatic waste oil pump out. Also features heavy-duty castors for easy mobility.

- **Maximum storage tank capacity:** 70L. Catch pan: 10L.
- Uses workshop air for emptying waste oil (pump out/drainage). Working pressure: 0.75MPa (110psi). Draining pressure: 0.18~0.20MPa (29psi).
- **Minimum working height:** 1350mm.
- **Maximum working height:** 1650mm.
- **Oil drain pipe length:** 1800mm. Pipe diameter: 12mm.
- **Also features:** 4x 100mm wheels - 2 fixed & 2 swivel with brakes.
- Main trolley manufactured from steel, 1.5mm thickness.

Height adjustable
catch pan from
1.35m up to 1.65m

Uses work-
shop airline
to pump out
waste oil

Minimum working height: 1.65m

NEW

Oil Filter Chain Wrench

60 - 170mm

7858

1/2" drive heavy-duty, double chain wrench designed to fit a wide range of filter sizes.

- Excellent slip resistant grip on oily surfaces and slim enough to fit in awkward areas.



Oil Filter Chain Wrench

- for HGV

6318

Strong, double width chain wrench with handle designed for heavy duty applications, including HGV use.

- Fits filters from 60-160mm diameter. Chain length: 520mm.



Oil Filter Wrench

94mm x 14 Flutes

7494

Oil filter wrench 94mm, 1/2"D for Man 403 and 603 trucks.

- **Applications:** removal or fitting of plastic oil filter covers fitted to MAN 403 & 603 trucks.
- Size: 94mm x 14 flutes.



Oil Filter Pliers 95mm

- 178mm

4876

Adjustable oil filter pliers for removing spin-on type oil filters on HGV's from 95mm to 178mm diameter. Multi-position clamp head for fast adjustment and serrated jaws for a strong grip even on oily surfaces.

- **Adjustment range:** 95mm-178mm diameter.

Serrated jaws for
additional grip on
oily surfaces.



NEW

Sump Plug Washers & Thread Repair Kits in Foam Inlay - for 9127

62984

A set of assorted sump plug washers, sump plug repair kits, and a sump plug pitch gauge, all supplied in a foam tray designed to fit the Laser Tools 70L oil service station trolley (Part Nos. 9127 and 9286).

Use with
Laser 9127
- see front
cover



360° Swivel Air Grease Gun 14oz

5002

Pneumatic grease gun with a 360° swivel action plus continuous flow (400cc) capacity. Complete with air vent valve and filter plug.

- 2400 - 6000psi output with 60 - 150psi compressed air input. Recommended working pressure 90psi (6.2 bar).
- Takes 400cc bulk grease/Standard 14 fluid oz cartridge.

Heavy-Duty Lever Grease Gun

7213

With air bleeder, rubber grip and zinc plated handle.

- Supplied with a steel extension and 4 jaw coupler. Takes 400g cartridges or 500cc of bulk grease.

Double Lever Grease Gun for Screw-In Cartridges

7215

Screw in cartridge works on special vacuum technology that ensures full utilisation of grease in the cartridge as well as eliminating priming issues associated with conventional grease guns.

- 300mm flexi hose with 4 jaw coupler.

Slide-On Swivel Joint Connector 1/8" BSP 2pc

31226

Swivel Connector for use with conventional & pneumatic Grease Gun hosing.

- Slide-on / knuckle joint Type.



Large Capacity Grease Pump - 30L

9381

NEW

A manually operated, large-capacity grease gun that can hold up to 30L of grease.

It can accommodate an 18L round grease drum without the need to decant the grease.

- Portable hand-operated lever.
- High output @ 3cc/stroke. Max. pressure: 5,000psi (350bar).
- Internal dimensions (inc. lid): 345mm diameter x 370mm deep.

- Features a 2m long delivery hose, together with 2x heavy-duty wheels & handle for ease of transportation.



HGV Sump Plug & Washers

Sump plugs and washers suitable for common commercial vehicles.

Connect
Workshop Consumables

| Code | Size | Qty | Application |
|-------|--|-----|-------------|
| 33168 | M26 x 1.5mm; thread length: 9mm; with 22mm Hex drive | 1pc | DAF |
| 33167 | M22 x 1.5mm; thread length: 12mm; with 12mm Hex drive | 1pc | DAF |
| 33166 | M22 x 1.5mm; thread length: 14mm; with 10mm square drive | 1pc | DAF |
| 33161 | M22 x 1.5mm; thread length: 10mm; with 12mm Hex drive | 1pc | Iveco |
| 33160 | M22 x 1.5mm; thread length: 10mm; with 12mm Hex drive | 1pc | Iveco |
| 33159 | M22 x 1.5mm; thread length: 10mm; with 22mm Hex drive | 1pc | Iveco |
| 33158 | M24 x 1.5mm; thread length: 26.5mm; with 12mm Hex drive | 1pc | Volvo |
| 33157 | M24 x 1.5mm; thread length: 26mm; with 11mm Hex drive | 1pc | Volvo |
| 33155 | M24 x 1.5mm; thread length: 39mm; with 19mm Hex drive | 1pc | Scania |
| 33154 | M22 x 1.5mm; thread length: 14mm; with 9mm Hex drive | 1pc | MAN |
| 33153 | M24 x 1.5mm; thread length: 13mm; with 12mm Hex drive | 1pc | Renault |
| 33152 | M16 x 1.5mm; thread length: 12mm; with 8mm Square drive | 1pc | Renault |
| 33151 | M22 x 1.5mm; thread length: 10mm; with 12mm Hex drive | 1pc | Renault |
| 33150 | M24 x 1.5mm; thread length: 12mm; with 14mm Hex drive | 1pc | Renault |



A full range of sump plugs are available - scan to visit **Connect-Consumables** website



BOOK A
VISIT
TODAY!

LASER[®]

COMMERCIAL DEMONSTRATION VAN

OUR NEW, IMPROVED
AND FULLY EQUIPPED
MOBILE TECH CENTRE,
BRINGING YOU ALL THE
LATEST HGV PRODUCTS
DIRECTLY TO YOU!

Our fully fitted Commercial Demonstration Van on the road promoting and demonstrating the latest tools for commercial vehicles.

Visiting customers nationwide, Laser's expert, fully trained technicians, demonstrate how the tools work and allow businesses to find out the time saving benefits of the latest products.

Our Laser van workout days are available to all of our Tool Connection customers.

The vans carry everything from specialist tools to unique consumables and display products from each of our brands.

Contact us for further information:
sales.support@toolconnection.co.uk

www.toolconnection.co.uk/tech-van-booking



Promotion valid from 1st February 2026 - 30th April 2026 while stocks last.
All products available through your local supplier of The Tool Connection Ltd branded products. All prices correct at the time of going to press and exclude VAT. The Tool Connection Ltd reserve the right to change prices or take products off of promotion without prior notice.



The Tool Connection Ltd.

Kineton Road | Southam | Warwickshire
CV47 0DR | Tel: 01926 815000